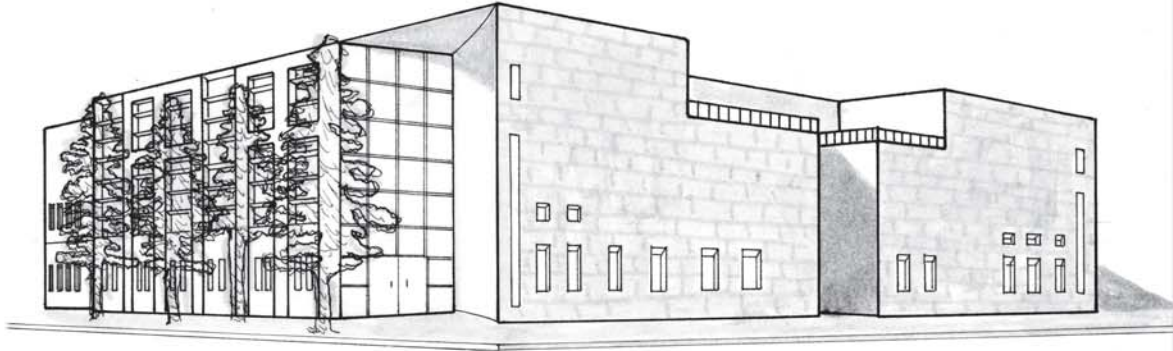


Savannah: A Living History

Two-Point Perspective: Jepson Exterior



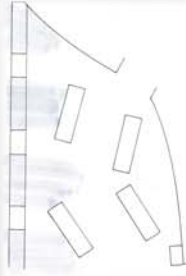
Scale: 1/30



A space is partially defined by the entrances into the space. In this gallery there are three different entrances. From the hallway leading to the gallery, from the adjoining gallery and from the theater gallery exit.



A design technique to help a space feel less confined is to add ample large windows. These windows not only let in light but they also help create a larger feeling in the space lessening the cramped feeling.



Related to the adding of windows to liven a space, the light let in by these windows creates a play of light and dark within a space. By not adding windows you create an almost sad feeling within a space.

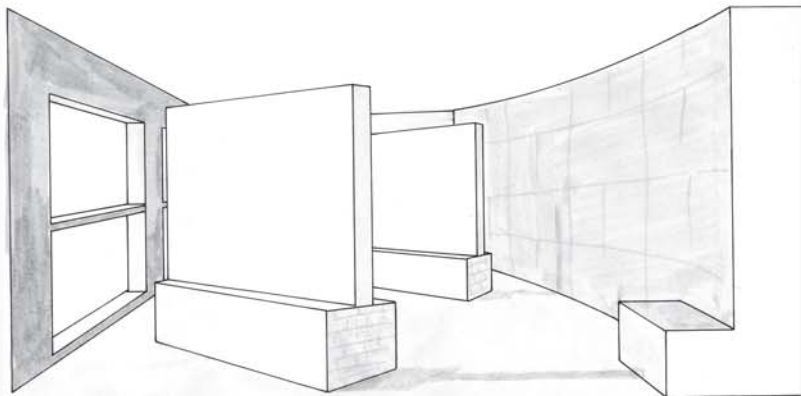


Every space has a specific area that resonates with you after you are gone. In this gallery space that is the pathway of the four display cases and the opening to observe the view out the window.



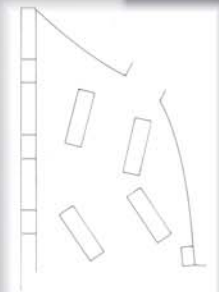
Every space has a common path of movement and connectivity. In a well-designed space, the main path is flowing between the entrance to the gallery and the other fine spaces around the display.

One-Point Perspective: Jepson Intervention



Scale: 1/8 = 1/4"

Intervention Floor Plan



Intervention Concept Sketches

